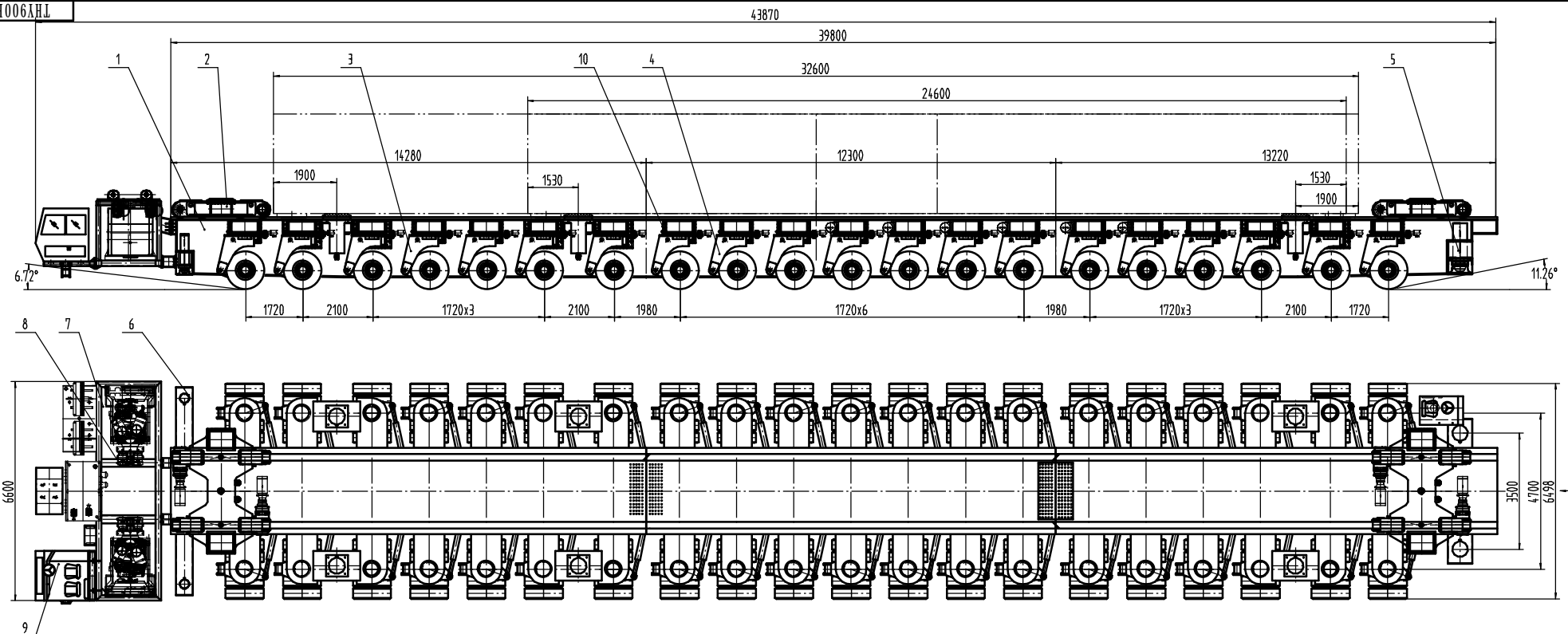
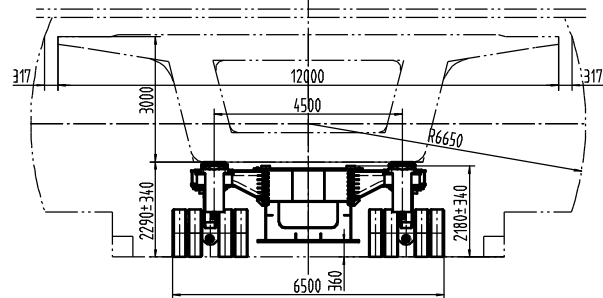


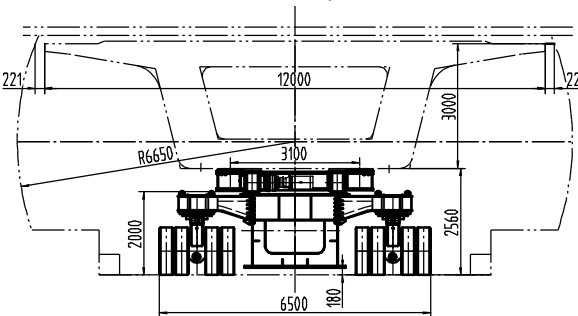
THY900B



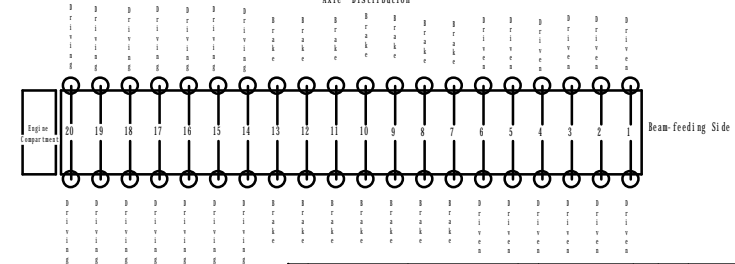
Girder-transporting Conditions Inside the Tunnel



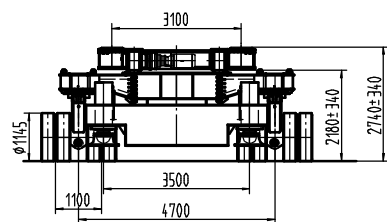
Beam-feeding Condition in Tunnel



Axle Distribution



A Direction



Main Technical Parameters:

- Rated Capacity: 900t
- Dimensions(L×W×H): 43.77×6.6×2.18±0.34m
- Self-weight: 328t
- Climbing Ability with Full Load: 5%
- Traveling Speed: Max. Speed in Flat with Full Load: 5km/h  
Max. Speed in Flat with Empty Load: 10km/h
- Min. Turning Radius: 42m(Outside), 29m (Inside)
- Operation Pressure: Traveling with Full Load in Flat: 21MPa  
Traveling with Full Load in Climbing: 30MPa

- Rated Power of Diesel Engine: 2×420kW
- Axle Shaft(Total Number/Drive Axle): 20/7
- Specification of Tire: 12.00-20  
Qty.: 20×8=160
- Shaft Distance: 1.72m
- Wheel Distance: 4.7/1.1m
- Ground Pressure: <0.6MPa with 900t loading
- Grounding Angle: 11.26°
- Off-grounding Angle: 6.72°

No.	Code	Name	Qty.	Unit	Total Weight
10	THY900B.10	Pneumatic System	1	2	2.00
9	THY900B.9	Electrical Control System	1	3	3.00
8	THY900B.8	Hydraulic System	1	6	6.00
7	THY900B.7	Engine Compartment	1	12	12.00
6	THY900B.6	Rear Support Leg	1	3.43	3.43
5	THY900B.5	Front Support Leg	1	5.69	5.69
4	THY900B.4	Drive Suspension Mechanism	26	2.88	74.88
3	THY900B.3	Driving Suspension Mechanism	14	3.14	43.96
2	THY900B.2	Trolley for Bragging Beam	2	9.93	19.86
1	THY900B.1	Equipment Body	1	131.71	155.77
				Unit	Total
				Weight	227.39
				Weight Ratio	1:60

118 Bureau of China Railway Group  
 Beijing Haiding Construction Machinery Co., Ltd.  
 Beam Transporter for the Tunnel Project  
**THY900B**